



international.alorair.com



"Like" us on LinkedIn

<http://www.linkedin.com/in/alex-alorair-922906ab/>

Alorair Solutions INC.

E-mail: sales@alorair.com

Website: international.alorair.com

Europe

Add: Unit one, The Old Vicarage Arkendale, HG5 0QR, UK

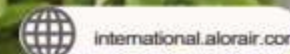
Tel: 0044 1423 341940

E-mail: gery.quinn@alorair.com

Australian

Add: P.O.Box 2309, Templestowe Lower Melbourne, Victoria 3107

Tel: +61 413 282 997



international.alorair.com



ALORAIR AI - 3112 This high pressure cleaning machine is designed for household cleaning cars.

High Pressure Washer

Restoration & Moisture & Ventilation
ALORAIR



The appliance may not be used in areas where a risk of explosion is present

Accessory



Adjustable nozzle



Siphon cleaning liquid pot



Trigger gun

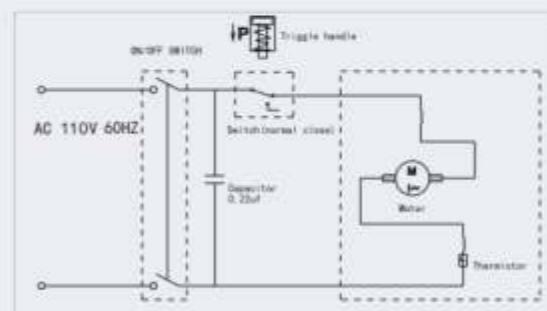
Specifications

Technical data	
Pantone No	yellow 7112005
Max pressure	100bar(10MPA/1450PSI)
Power	1200W
Voltage	100V-120V/60HZ 220V-240V/50HZ
Flow rate	300L/H
Max water temperature	40°C
Motor	carbon brush
Pump	aluminum
Plug	VDE
Packing and loading information	
Gross weight(G.W)	6.5kg(14.3lbs)
Net weight(N.W)	5.6kg(12.3lbs)
Gift box Size	270x225x510mm(10.6x8.9x20.1in)
Package	1pcs/gift box
Power cord length	5m
Loading quantity	855/20FCL
	1782/40FCL
	1989/40HQ
Accessories	5m high pressure hose Adjustable spray lance water gun

Key Design Features

1. Durable universal motor and three-plunger pressure pump
2. Automatic total stop system when gun is shut off
3. Adjustable nozzle adjusts from stream to fan or foggy spray pattern
4. Nozzle, water gun and high pressure hose can be disassembled separately
5. With self-absorb function
6. Can be with shampoo or detergent for cleaning
7. Noise lower than 85 db(a)

Schematic diagram



Restoration & Moisture & Ventilation
ALORAIR

High Pressure Washer

ALORAIR AI - 3112 This high pressure cleaning machine is designed for household cleaning cars.



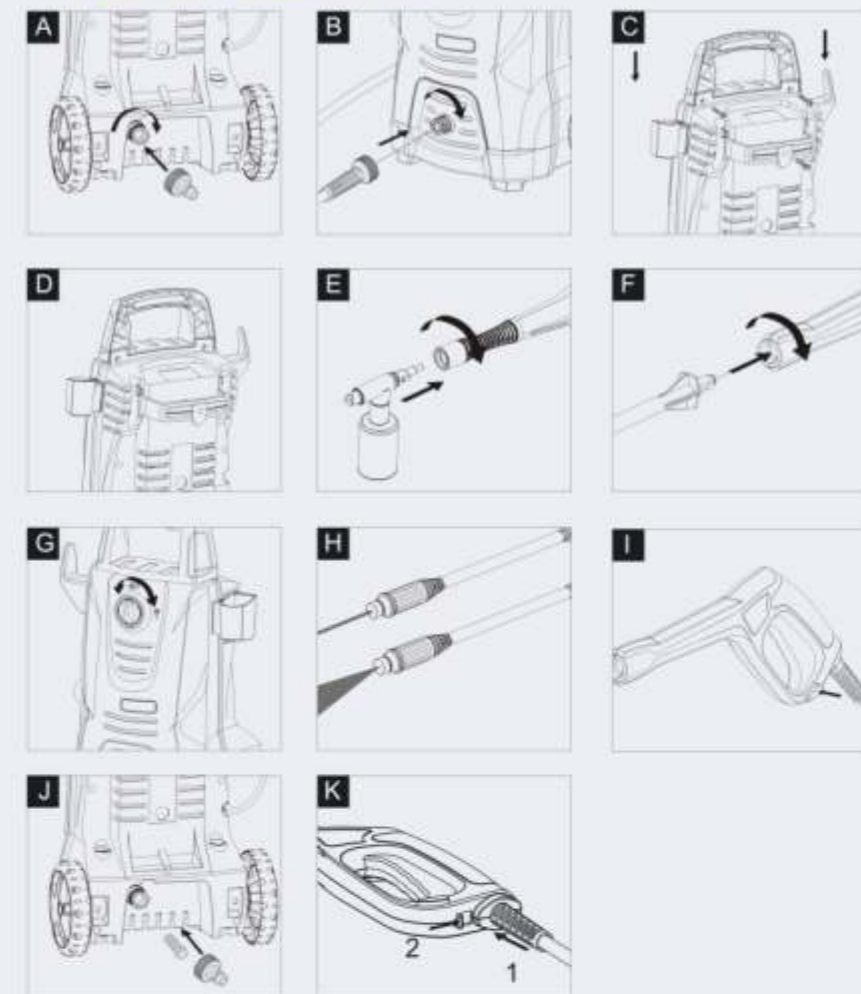
Design features

With its excellent appearance and upright structure, and free-adjustable handle, flexible trolleys, it will make you easy to move while in using, besides, we add a storage part for water gun in a safety condition when in storing or moving. And electrical cable could be furled and put at the back of the machine. Best for cleaning gardening facilities, cars, bicycles, porch etc., such moderate cleaning work.

Danger

1. Never touch the mains plug and the socket with wet hands
2. The appliance must not be used if the power cord or important parts of the appliance, e.g. high pressure hoses, trigger gun or safety devices are damaged. Please arrange for it to be replaced immediately by an authorised repair agent or a skilled electrician.
3. The high pressure washer must not be directed at other persons or directed by the user at him/herself to clean clothing or footwear.
4. If the appliance is used in hazardous areas (e.g. fling stations) all of the safety provisions and operating instructions detailed in this manual must be observed.
5. Never use the appliance to clean objects containing hazardous substances
6. Vehicle tyres or tyre valves are susceptible to damage from the high pressure washer and may burst. The first indication of this is a discoloration of the tyre. Damaged vehicle tyres/tyre valves are highly dangerous. Ensure that a distance of at least 30 cm is observed when cleaning with the washer
7. Risk of explosion. Do not spray flammable liquids. Never draw in fluids containing solvents or undiluted acids. This includes petrol, paint thinner and heating oil. The spray mist thus generated is highly inflammable, explosive and poisonous. Do not use acetone, undiluted acids or solvents as they are damaging to the materials from which the appliance is made.

Installation diagram



Alorair Solutions INC. Web: international.alorair.com Mail: sales@alorair.com

Add: 16300 Shoemaker Ave, Cerritos, CA 90703 Phone: +001 888-990-7469

International Branches

Europe Add: Unit one, The Old Vicarage Arkendale, HG5 0QR, UK Tel: 0044 1423 341940

Australian Add: P.O. Box 2309, Templestowe Lower Melbourne, Victoria 3107 Tel: +61 413 282 997

Restoration & Moisture & Ventilation

ALORAIR

ALORAIR AI-60215M This high pressure cleaning machine is designed for household cleaning cars.

Restoration & Moisture & Ventilation
ALORAIR

High Pressure Washer



The appliance may not be used in areas where a risk of explosion is present



High pressure hose



Trigger gun



adjustable Lance



Power cord

Specifications

Technical data	
Pantone No	yellow 7112005
Max pressure	130bar(13MPA/1885PSI)
Power	1500W
Voltage	100V-120V/60HZ 220V-240V/50HZ
Flow rate	360L/H
Max water temperature	40°C
Motor	carbon brush
Pump	aluminum
Plug	VDE
Packing and loading information	
Gross weight(G.W)	8.7kg(19.2lbs)
Net weight(N.W)	7.5kg(16.5lbs)
Gift box Size	320x320x570mm(12.6x12.6x22.4in)
Package	1pcs/gift box
Power cord length	5m
Loading quantity	518/20FCL
	1086/40FCL
	1226/40HQ
Accessories	5m high pressure hose Adjustable spray lance water gun

Key Design Features

1. Durable universal motor and three-plunger pressure pump
2. Automatic total stop system when gun is shut off
3. Adjustable nozzle adjusts from stream to fan or foggy spray pattern
4. Nozzle, water gun and high pressure hose can be disassembled separately
5. With self-absorb function
6. Can be with shampoo or detergent for cleaning
7. Noise lower than 85 db(a)



Easy to Carry



Hassle Free



Convenient Carry Handle



Restoration & Moisture & Ventilation
ALORAIR

ALORAIR AI-60215M This high pressure cleaning machine is designed for household cleaning cars.

High Pressure Washer

Design features

With its excellent appearance and upright structure, and free-adjustable handle, flexible trolleys, it will make you easy to move while in using, besides, we add a storage part for water gun in a safety condition when in storing or moving. And electrical cable could be furled and put at the back of the machine..

Best for cleaning gardening facilities, cars, bicycles, porch etc., such moderate cleaning work.

Danger

1. Never touch the mains plug and the socket with wet hands
2. The appliance must not be used if the power cord or important parts of the appliance, e. g. high pressure hoses, trigger gun or safety devices are damaged. Please arrange for it to be replaced immediately by an authorised repair agent or a skilled electrician.
3. The high pressure washer must not be directed at other persons or directed by the user at him/herself to clean clothing or footwear.
4. If the appliance is used in hazardous areas (e. g. fling stations) all of the safety provisions and operating instructions detailed in this manual must be observed.
5. Never use the appliance to clean objects containing hazardous substances
6. Vehicle tyres or tyre valves are susceptible to damage from the high pressure washer and may burst. The first indication of this is a discoloration of the tyre. Damaged vehicle tyres/tyre valves are highly dangerous. Ensure that a distance of at least 30 cm is observed when cleaning with the washer
7. Risk of explosion. Do not spray flammable liquids. Never draw in fluids containing solvents or undiluted acids. This includes petrol, paint thinner and heating oil. The spray mist thus generated is highly inflammable, explosive and poisonous. Do not use acetone, undiluted acids or solvents as they are damaging to the materials from which the appliance is made.



Power cord



Detergent tank



Current protection switch



easy switching power



Alorair Solutions INC. Web: international.alorair.com Mail: sales@alorair.com

Add: 16300 Shoemaker Ave, Cerritos, CA90703 Phone: +001 888-990-7469

International Branches

Europe Add: Unit one, The Old Vicarage Arkendale, HG5 0QR, UK Tel: 0044 1423 341940

Australian Add: P.O.Box 2309, Templestowe Lower Melbourne, Victoria 3107 Tel: +61 413 282 997

Restoration & Moisture & Ventilation

ALORAIR



ALORAIR AI-60514M This high pressure cleaning machine is designed for household cleaning cars.

High Pressure Washer

Restoration&Moisture&Ventilation
ALORAIR



The appliance may not be used in areas where a risk of explosion is present



Restoration&Moisture&Ventilation
ALORAIR

High Pressure Washer

ALORAIR AI-60514M This high pressure cleaning machine is designed for household cleaning cars.

Design features

With it's excellent appearance and upright structure, and free-adjustable handle, flexible trolleys, it will make you easy to move while in using, besides, we add a storage part for water gun in a safety condition when in storing or moving. And electrical cable could be furled and put at the back of the machine.. Best for cleaning gardening facilities, cars, bicycles, porch etc., such moderate cleaning work.

Danger

1. Never touch the mains plug and the socket with wet hands
2. The appliance must not be used if the power cord or important parts of the appliance, e. g. high pressure hoses, trigger gun or safety devices are damaged. Please arrange for it to be replaced immediately by an authorised repair agent or a skilled electrician.
3. The high pressure washer must not be directed at other persons or directed by the user at him/herself to clean clothing or footwear.
4. If the appliance is used in hazardous areas (e. g. fling stations) all of the safety provisions and operating instructions detailed in this manual must be observed.
5. Never use the appliance to clean objects containing hazardous substances
6. Vehicle tyres or tyre valves are susceptible to damage from the high pressure washer and may burst. The first indication of this is a discoloration of the tyre. Damaged vehicle tyres/tyre valves are highly dangerous. Ensure that a distance of at least 30 cm is observed when cleaning with the washer
7. Risk of explosion. Do not spray flammable liquids. Never draw in fluids containing solvents or undiluted acids. This includes petrol, paint thinner and heating oil. The spray mist thus generated is highly inflammable, explosive and poisonous. Do not use acetone, undiluted acids or solvents as they are damaging to the materials from which the appliance is made.



Power cord



Detergent tank



Current protection switch



easy switching power



High pressure hose



Trigger gun



adjustable Lance



Power cord

Specifications

Technical data	
Pantone No	yellow 7112005
Max pressure	120bar(12MPA/1740PSI)
Power	1400W
Voltage	100V-120V/60HZ 220V-240V/50HZ
Flow rate	340L/H
Max water temperature	40°C
Motor	carbon brush
Pump	aluminum
Plug	VDE
Packing and loading information	
Weight	6.8kg(15lbs)
Gift box Size	273x280x462mm(10.7x11x18.2in)
Package	1pcs/gift box
Power cord length	5m
Loading quantity	740/20FCL
	1570/40FCL
	1770/40HQ
Accessories	5m high pressure hose Adjustable spray lance water gun

Key Design Features

1. Durable universal motor and three-plunger pressure pump
2. Automatic total stop system when gun is shut off
3. Adjustable nozzle adjusts from stream to fan or foggy spray pattern
4. Nozzle, water gun and high pressure hose can be disassembled separately
5. With self-absorb function
6. Can be with shampoo or detergent for cleaning
7. Noise lower than 85 db(a)



Easy to Carry



Hassle Free



Convenient Carry Handle



Alorair Solutions INC. Web: international.alorair.com Mail: sales@alorair.com

Add: 16300 Shoemaker Ave, Cerritos, CA90703 Phone: +001 888-990-7469

International Branches

Europe Add: Unit one, The Old Vicarage Arkendale, HG5 0QR, UK Tel: 0044 1423 341940

Australian Add: P.O.Box 2309, Templestowe Lower Melbourne, Victoria 3107 Tel: +61 413 282 997

Restoration&Moisture & Ventilation

ALORAIR