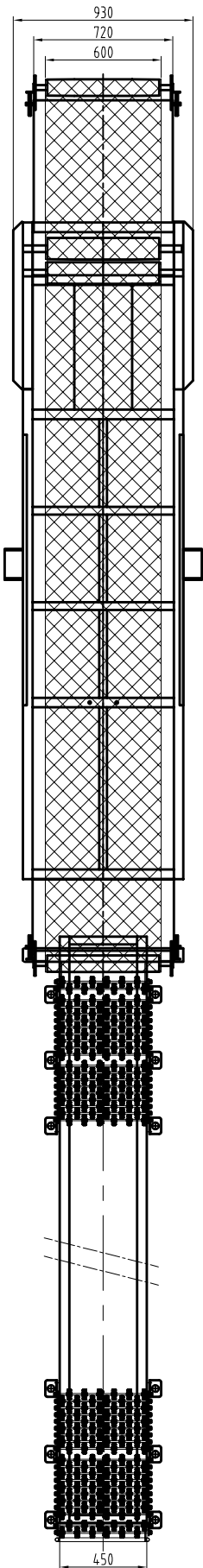


Part 1: Inclined Belt Conveyor

Part 2: 9m Flexible Gravity Skate Wheel Conveyor



Technical Parameters

Part 1: Inclined Belt Conveyor

- 1. Belt Specs: W=600mm, T=5mm, rough top PVC belt
- 2. Adjustable Speed: 10-20m/min, forward & reverse
- 3. Adjustable Height: 700-2500mm
- 4. Load Capacity: 50kg/m
- 5. Lift Motor: 2.2kw/Belt Motor: 1.5kw
- 6. Power Supply: 380V, 3-PH, 50Hz or 220V, 1-PH, 50Hz
- 7. Packing Size: L4700*W950*H700, 3.13CBM, G.W.: 680KGS

Part 2: 9m Flexible Gravity Skate Wheel Conveyor

- 1. Effective Width: 450mm
- 2. Adjustable Height: 700-1000mm
- 3. Load Capacity: 40kg/m
- 4. Wheels Options: Φ 48mm plastic wheels or Φ 50mm steel wheels
- 5. Minimum carton length when full open: 280mm
- 5. Packing Size: L3050*W600*H500, 1CBM, G.W.: 190KGS

YIFan Conveyor										
Truck Loading Conveyor										
Model: TLC-G600-8S										
标识	人数	分区	规格/材料	签名	车号	日期	材料			
设计			标准化				比例	重量/Kg	数量	
审核							比例	重量	数量	
工艺							米	张	张	

客户名称